

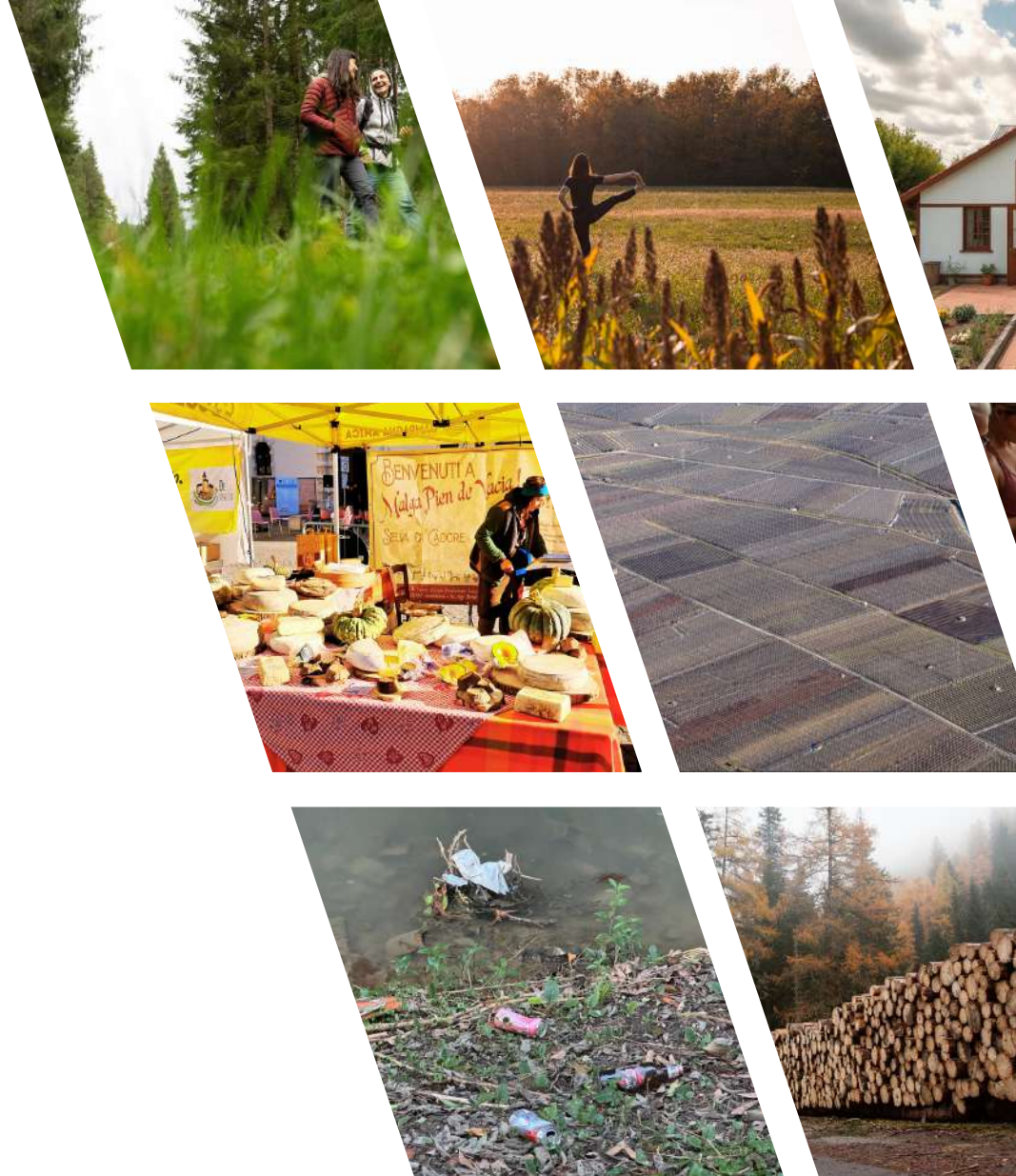


Funded by
the European Union

VERVE Rural Cards

Supplementary Materials n. 2 of the VERVE Toolkit "Imagining Vibrant Rural-Mountain Futures" (2025)

by Angela Moriggi, Giulia Corradini, Matilda Todesco,
Deborah Vedovetto, Laura Secco





Funded by
the European Union

VERVE (co-creative Visioning procEsses for tRansformative social innoVation in rural arEas) is funded by the European Union under the Marie Skłodowska-Curie actions (VERVE H2020-MSCA-IF-2020, Grant Agreement n.101025710). Views and opinions expressed are however those of the authors only and do not necessarily reflect those of the European Union. Neither the European Union nor the granting authority can be held responsible for them.

VERVE Rural Cards

A set of 66 images showcasing practices and phenomena related to rural areas. They highlight emerging innovations like telemedicine and nature-based wellness, as well as established practices such as social agriculture. The cards also depict broader trends, including extreme weather events and depopulation.

Designed to spark conversations, the cards invite reflections on the potential of different practices and trends to shape the future of rural-mountain areas.

You can use them to facilitate the method “Expanding Futures with Rural Cards” (Method 2, Pathway 2, p. 31) shared in the [VERVE Toolkit](#) “Imagining Vibrant Rural-Mountain Futures.”

At p. 34 of the Toolkit, you can find a complete overview of all the cards.



UNIVERSITÀ
DEGLI STUDI
DI PADOVA

TESAF



Creative Commons License CC BY-NC-SA

This license enables reusers to distribute, remix, adapt, and build upon the material in any medium or format for noncommercial purposes only, and only so long as attribution is given to the creator. If you remix, adapt, or build upon the material, you must license the modified material under identical terms.

To cite this material:

Moriggi A., Corradini G., Todesco M., Vedovetto D., Secco L. (2025).
VERVE Rural Cards. Toolkit Supplementary Materials n.2. Department of Land,
Environment, Agriculture and Forestry, University of Padua. Padova, Italy.
DOI: https://doi.org/10.25430/VERVE_2

Agricultural sector



VERVE

Università degli Studi di Padova **TESAF**

VERVE is funded by the European Union under the Marie Skłodowska-Curie Actions, GA no.101025710





Agricultural sector

Extensive herding



VERVE is funded by the European Union under the Marie Skłodowska-Curie Actions, GA no.101025710



Agricultural sector

Wood harvesting



VERVE is funded by the European Union under the Marie Skłodowska-Curie Actions, GA no.101025710



Agricultural sector

Intensive farming and mechanization



VERVE is funded by the European Union under the Marie Skłodowska-Curie Actions, GA no.101025710



Agricultural sector

Vertical farming



VERVE is funded by the European Union under the Marie Skłodowska-Curie Actions, GA no.101025710



Agricultural sector

Artificial pollination



VERVE is funded by the European Union under the Marie Skłodowska-Curie Actions, GA no.101025710



Agricultural sector

Intensive animal farming



VERVE is funded by the European Union under the Marie Skłodowska-Curie Actions, GA no.101025710



Agricultural sector

Agroforestry



VERVE is funded by the European Union under the Marie Skłodowska-Curie Actions, GA no.101025710



Agricultural sector

Precision agriculture



VERVE is funded by the European Union under the Marie Skłodowska-Curie Actions, GA no.101025710





Agricultural sector

Genetically Modified Organisms



VERVE is funded by the European Union under the Marie Skłodowska-Curie Actions, GA no.101025710



Agricultural sector

Biocultural diversity



VERVE is funded by the European Union under the Marie Skłodowska-Curie Actions, GA no.101025710



Agricultural sector

Alternative food systems



VERVE is funded by the European Union under the Marie Skłodowska-Curie Actions, GA no.101025710



Agricultural sector

Traditional land use



VERVE is funded by the European Union under the Marie Skłodowska-Curie Actions, GA no.101025710



Agricultural sector

Regenerative and organic agriculture



VERVE is funded by the European Union under the Marie Skłodowska-Curie Actions, GA no.101025710



Agricultural sector

Short food supply chains



VERVE is funded by the European Union under the Marie Skłodowska-Curie Actions, GA no.101025710



Agricultural sector

Rural e-commerce



VERVE is funded by the European Union under the Marie Skłodowska-Curie Actions, GA no.101025710



Agricultural sector

Young farmers



VERVE is funded by the European Union under the Marie Skłodowska-Curie Actions, GA no.101025710



Agricultural sector

Social and educational agriculture



VERVE is funded by the European Union under the Marie Skłodowska-Curie Actions, GA no.101025710

Non-agricultural sectors



VERVE is funded by the European Union under the Marie Skłodowska-Curie Actions, GA no.101025710



20/66

© Giulia Corradini



23/66

© Giulia Corradini



18/66

© Giulia Corradini



21/66

© Giulia Corradini



24/66

© Giulia Corradini



19/66

© Giulia Corradini



22/66

© Giulia Corradini



25/66

© Giulia Corradini



Non-agricultural sectors

Animal-based therapy



VERVE is funded by the European Union under the Marie Skłodowska-Curie Actions, GA no.101025710



Non-agricultural sectors

Mass tourism



VERVE is funded by the European Union under the Marie Skłodowska-Curie Actions, GA no.101025710



Non-agricultural sectors

Eco/ slow/ green tourism



VERVE is funded by the European Union under the Marie Skłodowska-Curie Actions, GA no.101025710



Non-agricultural sectors

Rural craftmanship



VERVE is funded by the European Union under the Marie Skłodowska-Curie Actions, GA no.101025710



Non-agricultural sectors

Nature-based therapy and wellbeing



VERVE is funded by the European Union under the Marie Skłodowska-Curie Actions, GA no.101025710



Non-agricultural sectors

Wild forest products



VERVE is funded by the European Union under the Marie Skłodowska-Curie Actions, GA no.101025710



Non-agricultural sectors

Forest-based education



VERVE is funded by the European Union under the Marie Skłodowska-Curie Actions, GA no.101025710



Non-agricultural sectors

Heritage and cultural tourism



VERVE is funded by the European Union under the Marie Skłodowska-Curie Actions, GA no.101025710



26/66

© Giulia Corradini



29/66

© Giulia Corradini



31/66

© Giulia Corradini



27/66

© AI-generated image



30/66

© Giulia Corradini



32/66

© Aurelio Torre



28/66

© Giulia Corradini

Governance & Society





VERVE
VERVE FOR RURAL VILLAGES
IN THE NORTH OF FINLAND
AND IN THE NORTH OF SWEDEN



TESAF
EUROPEAN TERRITORY
INITIATIVE FOR RURAL
AREAS



VERVE is funded by the European Union under the Marie Skłodowska-Curie Actions, GA no.101025710



33/66

© Siri Pisters



Governance & Society

Collaborative forest management



VERVE is funded by the European Union under the Marie Skłodowska-Curie Actions, GA no.101025710



Non-agricultural sectors

Renewable energy on the countryside



VERVE is funded by the European Union under the Marie Skłodowska-Curie Actions, GA no.101025710



Non-agricultural sectors

Carbon sequestration



VERVE is funded by the European Union under the Marie Skłodowska-Curie Actions, GA no.101025710



Governance & Society

Intentional / green / energy communities



VERVE is funded by the European Union under the Marie Skłodowska-Curie Actions, GA no.101025710



Non-agricultural sectors

Water use



VERVE is funded by the European Union under the Marie Skłodowska-Curie Actions, GA no.101025710



Non-agricultural sectors

Hunting and fishing



VERVE is funded by the European Union under the Marie Skłodowska-Curie Actions, GA no.101025710



Governance & Society

Protest movements



VERVE is funded by the European Union under the Marie Skłodowska-Curie Actions, GA no.101025710



Non-agricultural sectors

Mining



VERVE is funded by the European Union under the Marie Skłodowska-Curie Actions, GA no.101025710



34/66

© Giulia Corradini



37/66

© Giulia Corradini



40/66

© Giulia Corradini



35/66

© AI-generated image



38/66

© AI-generated image



41/66

© Giulia Corradini



36/66

© Giulia Corradini



39/66

© AI-generated image



42/66

© Carla Dalla Stella



Governance & Society

Integration of immigrants



VERVE is funded by the European Union under the Marie Skłodowska-Curie Actions, GA no.101025710



Governance & Society

Depopulation and aging population



VERVE is funded by the European Union under the Marie Skłodowska-Curie Actions, GA no.101025710



Governance & Society

Cooperatives and partnerships



VERVE is funded by the European Union under the Marie Skłodowska-Curie Actions, GA no.101025710



Governance & Society

Remote working and digital entrepreneurship



VERVE is funded by the European Union under the Marie Skłodowska-Curie Actions, GA no.101025710



Governance & Society

Active citizenship



VERVE is funded by the European Union under the Marie Skłodowska-Curie Actions, GA no.101025710



Governance & Society

Waste and overconsumption



VERVE is funded by the European Union under the Marie Skłodowska-Curie Actions, GA no.101025710



Governance & Society

Rural innovation hub



VERVE is funded by the European Union under the Marie Skłodowska-Curie Actions, GA no.101025710



Governance & Society

Circular economy



VERVE is funded by the European Union under the Marie Skłodowska-Curie Actions, GA no.101025710



Governance & Society

Changing gender roles



VERVE is funded by the European Union under the Marie Skłodowska-Curie Actions, GA no.101025710



43/66

© Siri Pisters



45/66

© Laura Secco



48/66

© Giulia Corradini



44/66

© Siri Pisters



46/66

© Giulia Corradini



49/66

© Giulia Corradini

Environmental phenomena



VERVE INTEGRATED ENVIRONMENTAL RESEARCH
ON THE BASIS OF
SCIENTIFIC KNOWLEDGE AND
POLICY RECOMMENDATIONS

 **TESAF**

 VERVE is funded by the European Union under the Marie Skłodowska-Curie Actions, GA no.101025710



47/66

© Edis Scopel



50/66

© Giulia Corradini



Environmental phenomena

Wild fauna



VERVE is funded by the European Union under the Marie Skłodowska-Curie Actions, GA no.101025710



Environmental phenomena

Bark beetle outbreaks



VERVE is funded by the European Union under the Marie Skłodowska-Curie Actions, GA no.101025710



Governance & Society

Smart villages



VERVE is funded by the European Union under the Marie Skłodowska-Curie Actions, GA no.101025710



Environmental phenomena

Soil erosion and water scarcity



VERVE is funded by the European Union under the Marie Skłodowska-Curie Actions, GA no.101025710



Environmental phenomena

Extreme weather events



VERVE is funded by the European Union under the Marie Skłodowska-Curie Actions, GA no.101025710



Governance & Society

Cultural festivals and events



VERVE is funded by the European Union under the Marie Skłodowska-Curie Actions, GA no.101025710



Environmental phenomena

Environmental pollution



VERVE is funded by the European Union under the Marie Skłodowska-Curie Actions, GA no.101025710



Environmental phenomena

Big predators



VERVE is funded by the European Union under the Marie Skłodowska-Curie Actions, GA no.101025710



51/66

© Giulia Corradini



54/66

© Giulia Corradini



56/66

© AI-generated image



52/66

© Giulia Corradini



55/66

© Thomas Campagnaro



57/66

© Giulia Corradini



53/66

© Giulia Corradini

Services & Infrastructures

VERVE

TESAF

VERVE is funded by the European Union under the Marie Skłodowska-Curie Actions, GA no.101025710



58/66

© Giulia Corradini



Services & Infrastructures

Community rural center



VERVE is funded by the European Union under the Marie Skłodowska-Curie Actions, GA no.101025710



Environmental phenomena

Glacier retreat



VERVE is funded by the European Union under the Marie Skłodowska-Curie Actions, GA no.101025710



Environmental phenomena

Ecosystem degradation



VERVE is funded by the European Union under the Marie Skłodowska-Curie Actions, GA no.101025710



Services & Infrastructures

Dams and dikes



VERVE is funded by the European Union under the Marie Skłodowska-Curie Actions, GA no.101025710



Environmental phenomena

Invasive alien species



VERVE is funded by the European Union under the Marie Skłodowska-Curie Actions, GA no.101025710



Environmental phenomena

Hydrogeological instability



VERVE is funded by the European Union under the Marie Skłodowska-Curie Actions, GA no.101025710



Services & Infrastructures

University in the countryside



VERVE is funded by the European Union under the Marie Skłodowska-Curie Actions, GA no.101025710



Environmental phenomena

Biodiversity



VERVE is funded by the European Union under the Marie Skłodowska-Curie Actions, GA no.101025710





Services & Infrastructures

Infrastructuring, accessibility and connectedness



VERVE is funded by the European Union under the Marie Skłodowska-Curie Actions, GA no.101025710



Services & Infrastructures

Second homes and holiday homes



VERVE is funded by the European Union under the Marie Skłodowska-Curie Actions, GA no.101025710



Services & Infrastructures

Telecommunication infrastructures



VERVE is funded by the European Union under the Marie Skłodowska-Curie Actions, GA no.101025710



Services & Infrastructures

Youth recreational activities



VERVE is funded by the European Union under the Marie Skłodowska-Curie Actions, GA no.101025710



Services & Infrastructures

Proximity services



VERVE is funded by the European Union under the Marie Skłodowska-Curie Actions, GA no.101025710



Services & Infrastructures

Tele health



VERVE is funded by the European Union under the Marie Skłodowska-Curie Actions, GA no.101025710



Services & Infrastructures

Social housing



VERVE is funded by the European Union under the Marie Skłodowska-Curie Actions, GA no.101025710



Services & Infrastructures

Sustainable mobility



VERVE is funded by the European Union under the Marie Skłodowska-Curie Actions, GA no.101025710